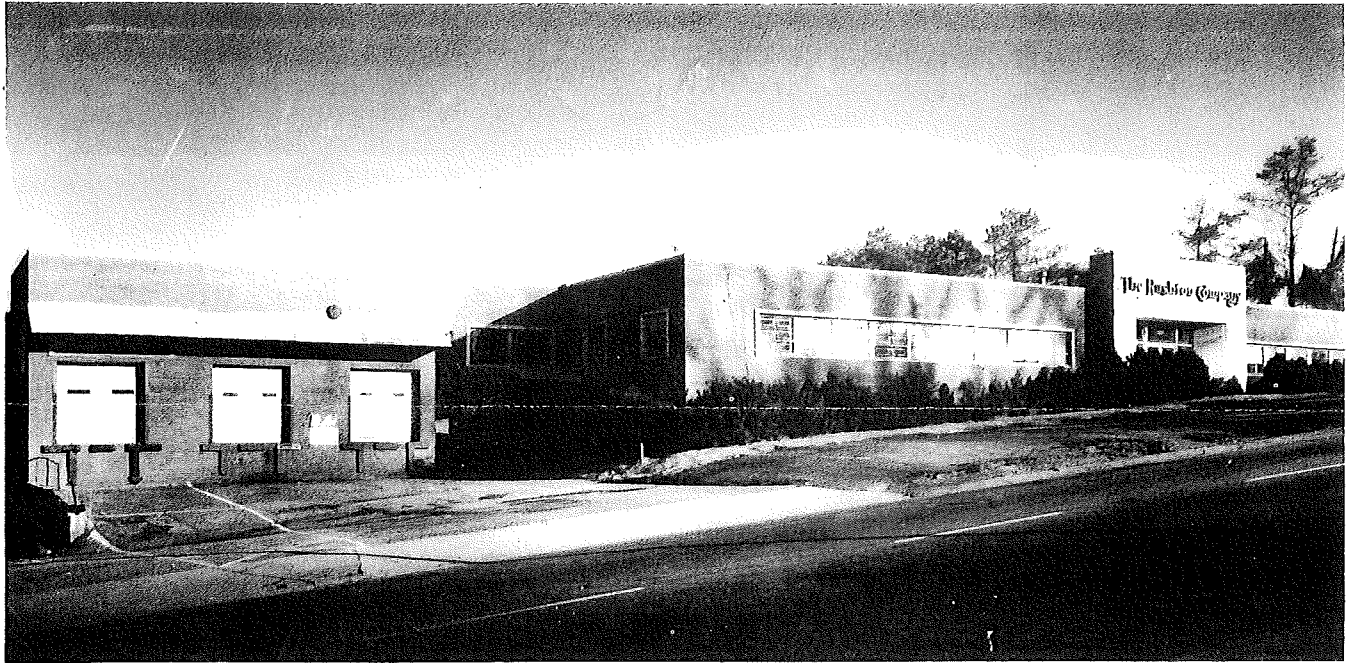


FOR LEASE

124,000 ± Sq. Ft.

Will Sub-Divide

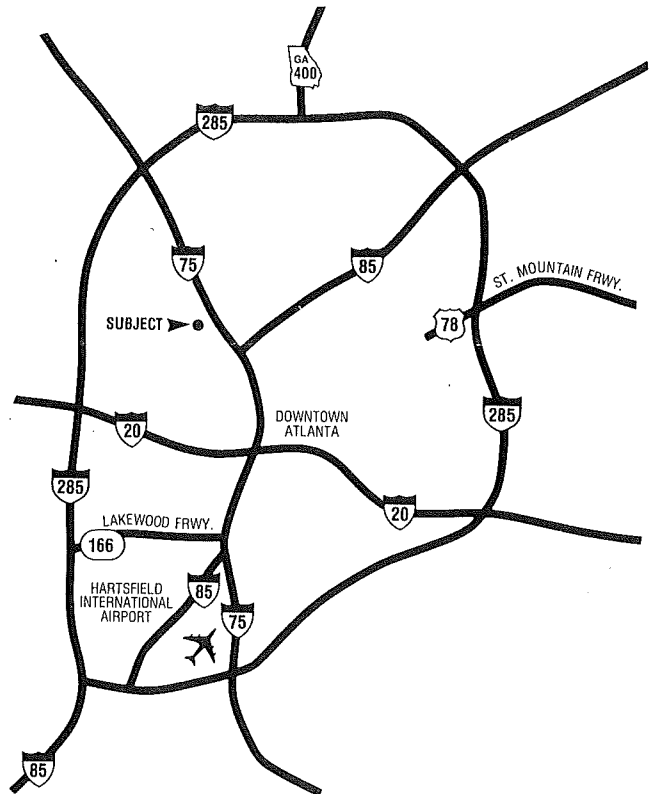
5.8 ± Acres



1275 Ellsworth Industrial Boulevard

- Lease all or part of facility
- Below market rental rate
- Sprinklered
- Ceiling heights range 12' to 19'
- 5 dock areas
- Close in, convenient to interstate
- Parking for 150 ± cars
- Excellent light manufacturing facility
- Units available from 21,400 ± sq.ft. and above
- Will build to suit office as required
- Lease/purchase option available

FOR INFORMATION CONTACT:
JOHN T. WEST
EXCLUSIVE AGENT
404/262-1300



COMMERCIAL BROKERAGE COMPANY

a ROYAL LEPAGE company

SUITE M-100 3333 PEACHTREE RD., N.E. ATLANTA, GEORGIA 30326